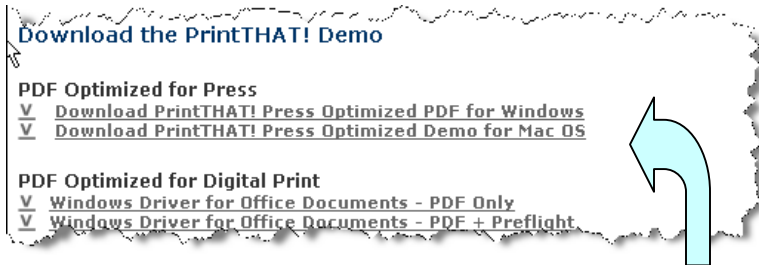


# Quick reference guide for PrintTHAT! Installation

This document highlights all of the steps required to install PrintTHAT on your desktop. You will find this process relatively easy and intuitive.

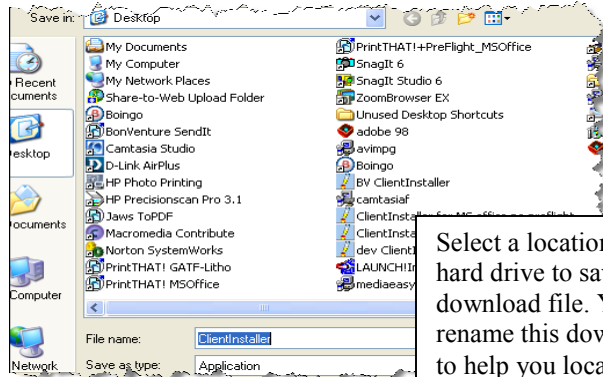
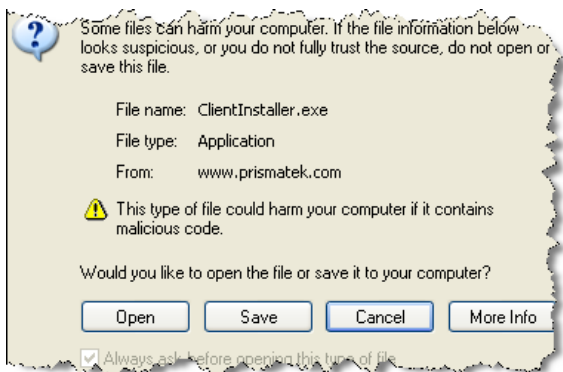
## Downloading the Driver from the web

In most cases your print provider will direct you to a download page similar to the one pictured below. Drivers are created by your print supplier and are tuned to a particular operating system and hardware (WinXP, OSX, PC, MAC etc) Drivers may also be created for a particular authoring applications such as MS Office or Quark.



**Note:** Although most drivers will work well all application, pay close attention to the description so you will choose the best driver for your particular situation. (Note: It is possible to have multiple drivers on your system)

1. To begin the download process, double click on the appropriate driver. A download window will appear

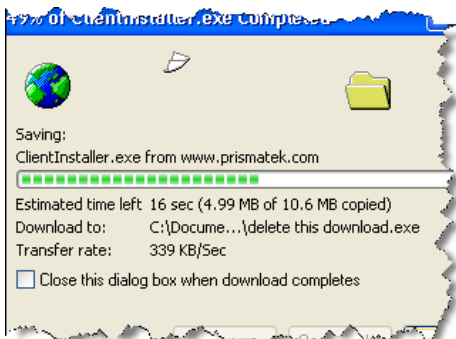


Select a location on your hard drive to save the download file. You can rename this download file to help you locate it.

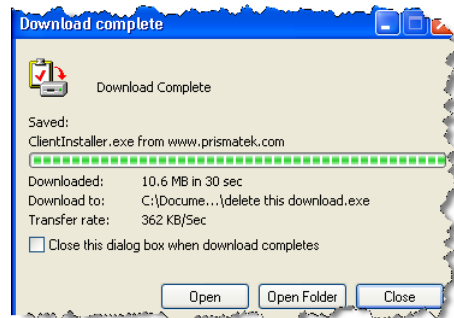
2. Select

3. Click

You should now see the download windows below.



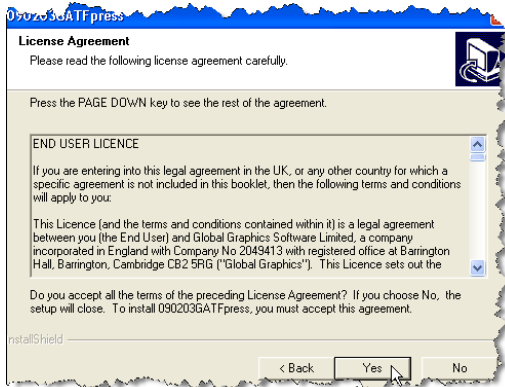
When the download is complete this window will appear



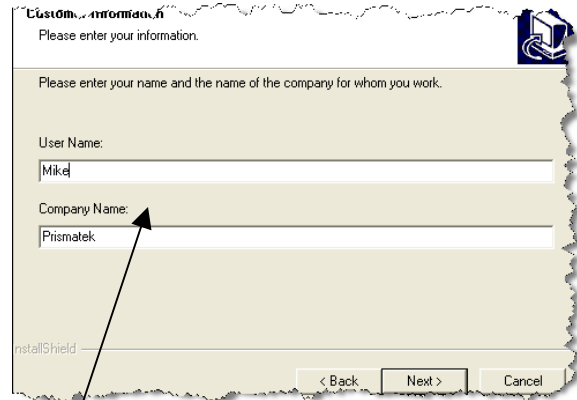
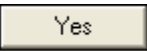
4. Select



5. Select

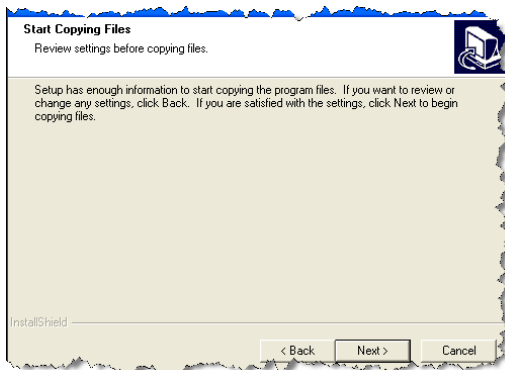


6. Select

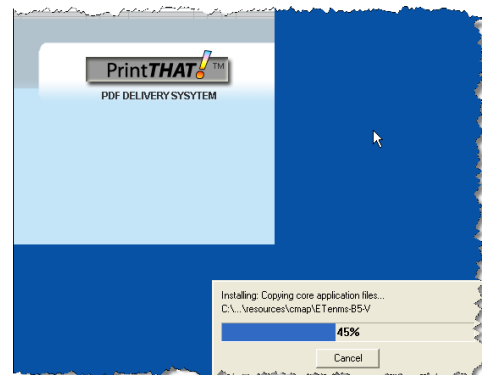


7. Enter your name and company

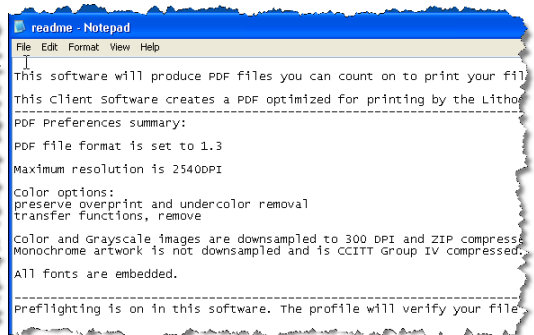
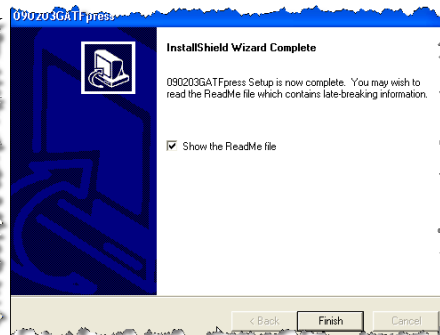
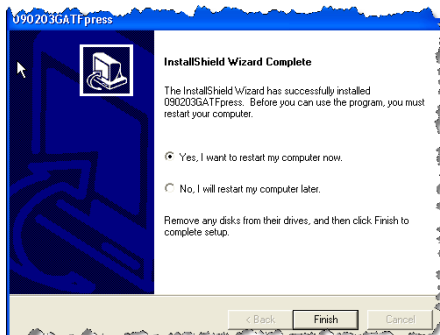
8. Select



9. Select



The application will now take over and begin the installation on you computer. This process should take only a few minutes



Depending on you operating system, one of these two boxes will appear.

10. Select



This box is the "readme" file It will contain new information or instructions not found in the published documentation.

**The installation is complete and you are now ready to begin to use PrintTHAT!**